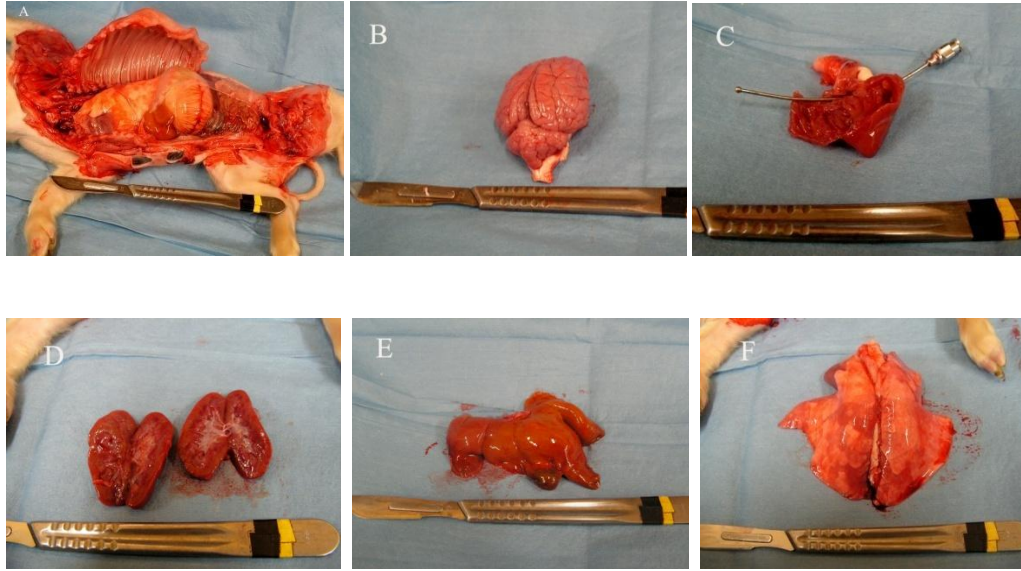


Supplemental Material Hao et al

Figure S1 shows the images of pathological examination of the cloned piglet. The external and internal anatomy of the newborn piglets produced by SCNT utilizing skin-stem cell nuclei were examined by a board certified pathologist. Examination included the genitals, head, trunk, appendages, digestive system, and other organs. The piglet had two normal pinnae (auricles), two normal external nares (nostrils), two normal eyes with upper and lower eyelids and nictitating membrane (third eyelid). The trunk, thoracic (rib), lumbar (lower back), and sacral (pelvic) vertebrae were normal. The piglet's legs had the forelimbs with normal shoulders, elbows, wrists, and digits. The piglet had normal hips, knees, ankles, heels, and digits. The piglet's digestive system (mouth, oral cavity, pharynx, esophagus, stomach, small intestine, large intestine, rectum, anus) were normal, and the spleen was a long, flat, red-brown organ which lies across the stomach; the pancreas, an elongate granular mass between the stomach and the small intestine. The cerebrum, cerebellum, medulla oblongata, spinal cord, pons, pituitary, ventricles of brain, hypothalamus, and meninges were observed to be normal in the piglet brain. The piglet heart had four chambers and four *valves*; the *aorta* is clearly visible at the top, with an *atrium* on either side, while the *ventricles* are in the bottom left. The cortex surrounds the kidney like bark. Note the well marked calices (white tissue). The pelvis has been sectioned and the uretra and many blood vessels have been trimmed off. The piglet's right lung consists of four lobes and the left of two lobes.



**Figure S1.** Morphology of the cloned piglets. A. Digestive system; B. Brain; C. Heart; D. Kidney; E. Liver; F. Lung.



**Born: 8-14-07**

**Piglets on 8-27-07**

**Birthday Weight:**

**Body weight:**

**95-1, 1.1Kg; 95-2, 1.3Kg**

**95-1, 1.98Kg; 95-2, 3.2Kg**

**Figure S2.** Cloned piglets 95-1 and 95-2 at two different ages.

**Table S1.** Microsatellite analysis of surrogates, cell lines and clones. The data presented below represents all the markers that were informative, i.e. generated an amplicon for each of the tissue samples.

**Cell line -male**

Marker	Cell line- male	Cloned piglet-male- 1	Cloned piglet-male - 2	Surrogate- 1
	Allele 1, 2	Allele 1, 2	Allele 1, 2	Allele 1, 2
SW2116	167	167	167	169,177
SW2419	122,139	122,139	122,139	141
SW122	117,121	117,121	117,121	117,130
S0025	114	114	114	114,117
KS141	214	214	214	210
SW1434	143,165	143,165	143,165	163
SW1135	185,194	185,194	185,194	198
SW874	210	210	210	208,210
SW864	173,181	173,181	173,181	175
SW38	131,132	131,132	131,132	131,135
SW1918	193,197	193,197	193,197	181
SWC55	130,156	130,156	130,156	130,152
S011	156	156	156	156,166
S0026	102,108	102,108	102,108	106,108
S0105	132	132	132	130,158
SW1682	160	160	160	162
S0120	172	172	172	168,172

**Cell line-female**

Marker	Cell line-female	Cloned piglet	Surrogate-2
	Allele 1, 2	Allele 1, 2	Allele 1, 2
SW1824	99,101	99,101	93,98
SW72	104,112	104,112	114
SW717	149,155	149,155	149,157
S0005	236,248	236,248	244
SW1434	145	145	143
SW1135	186,198	186,198	196,198
SW864	177	177	173,175
SW1405	100	100	100,107